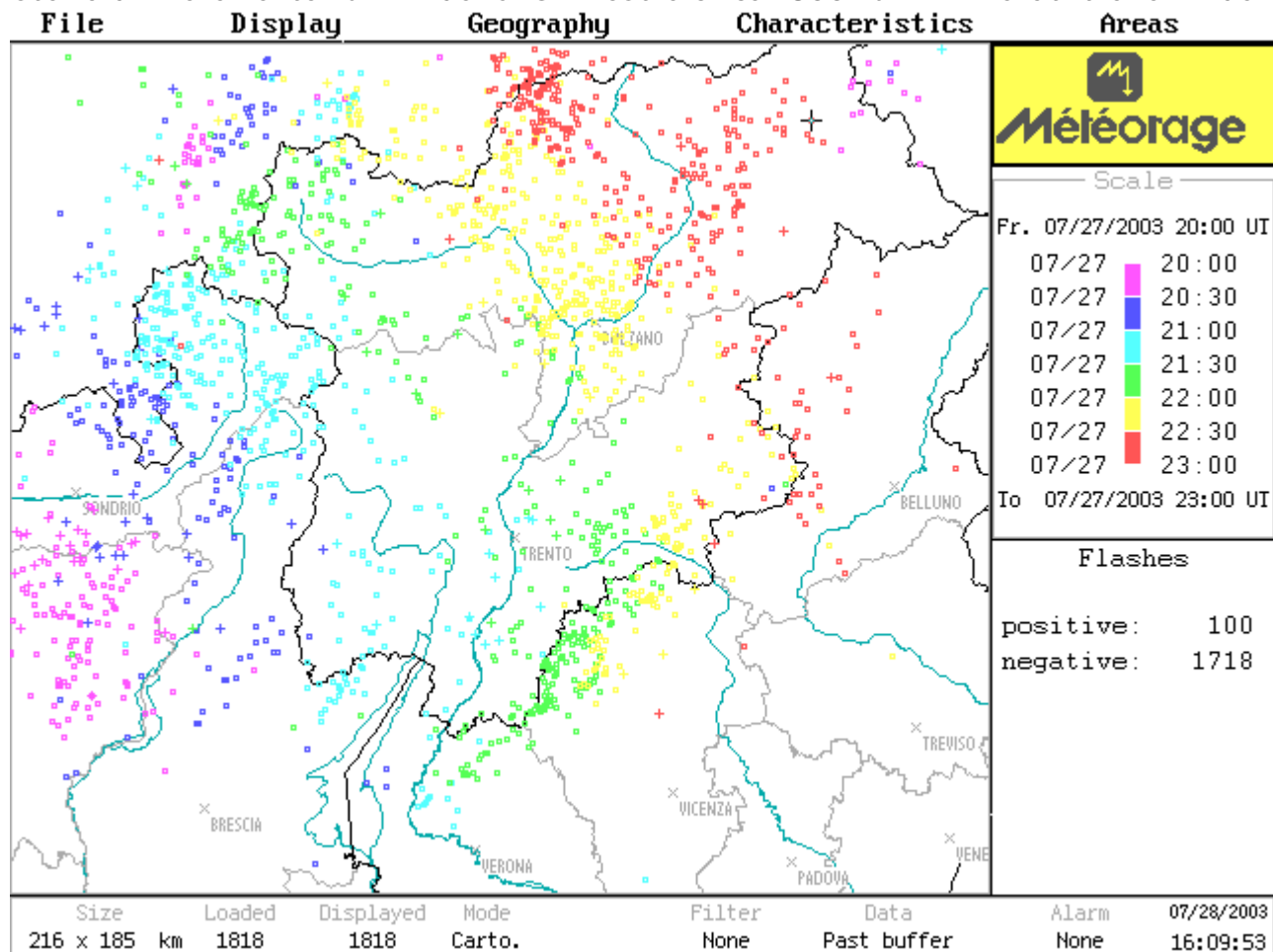


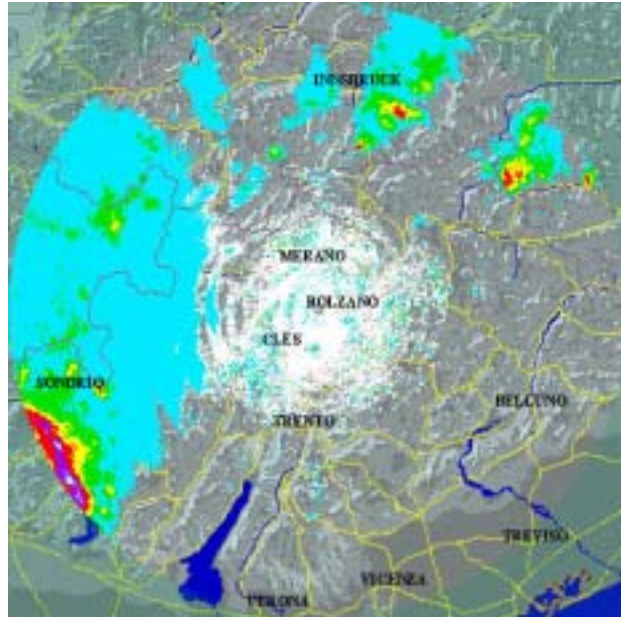


Il sistema di rilevamento fulmini del CESI mostra circa 1800 fulmini rilevati tra le 22 del 27 e le 01.00 del 28 luglio

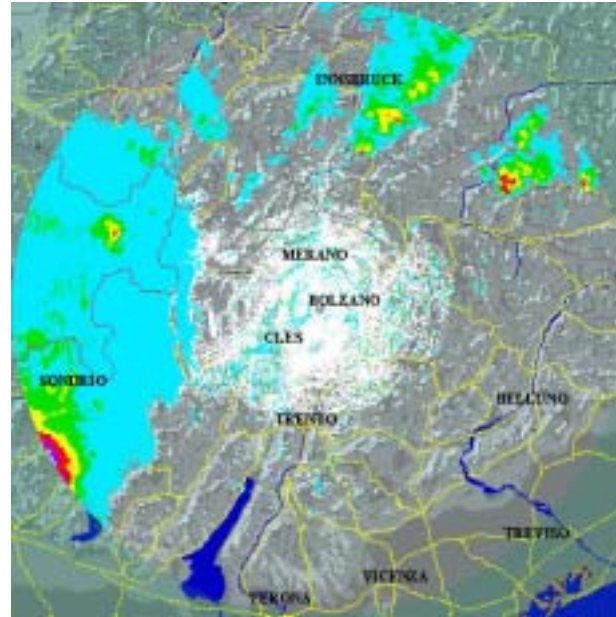


Le immagini radar del monte Macaion mostrano l'evoluzione sulla regione del fronte temporalesco.

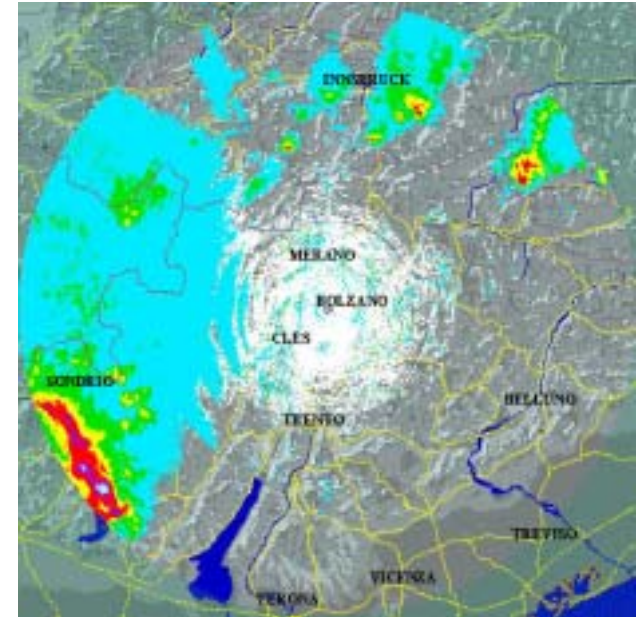
22.18



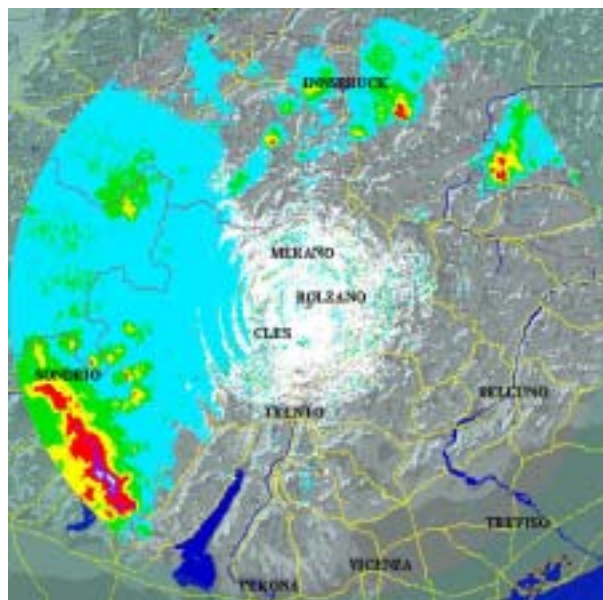
22.24



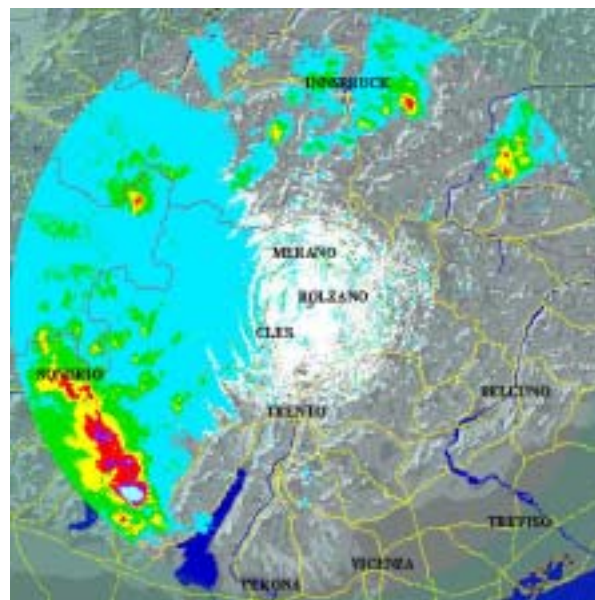
22.30



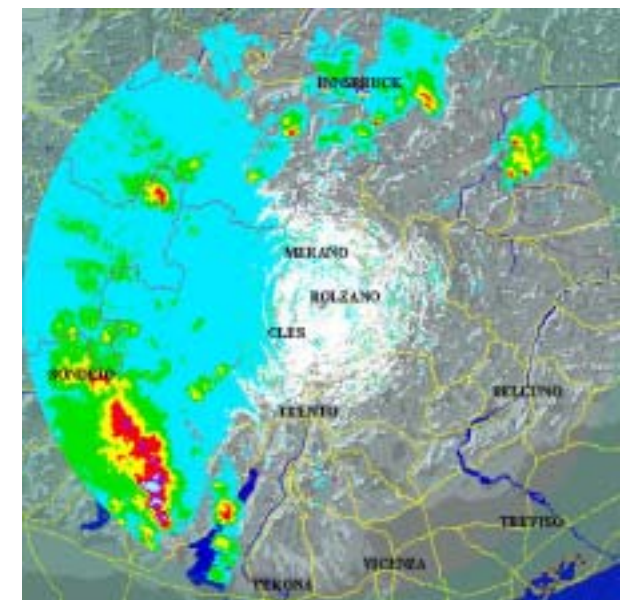
22.36



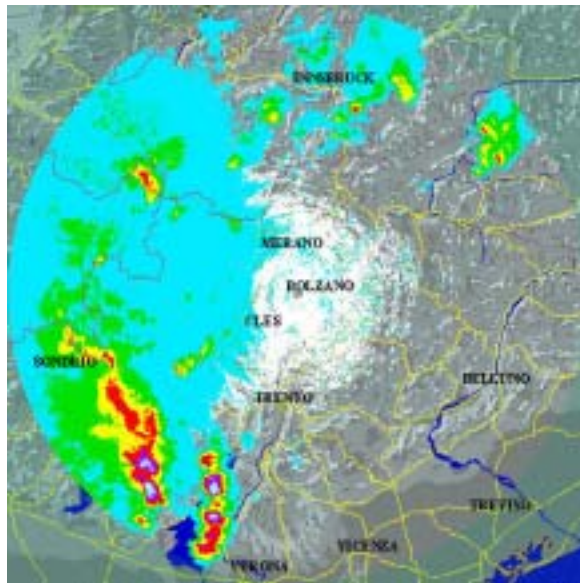
22.42



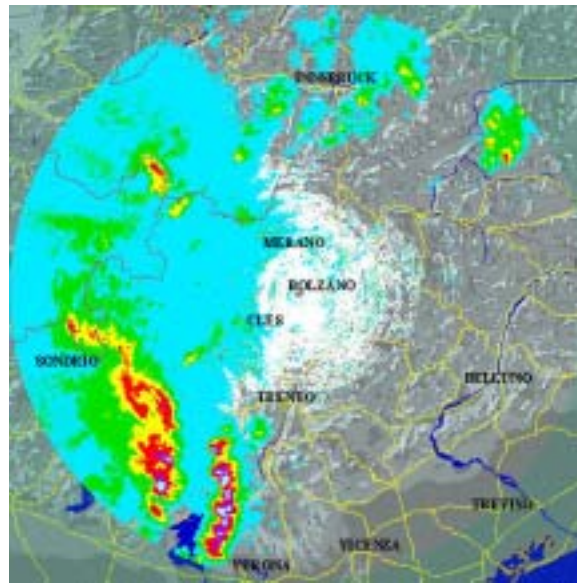
22.48



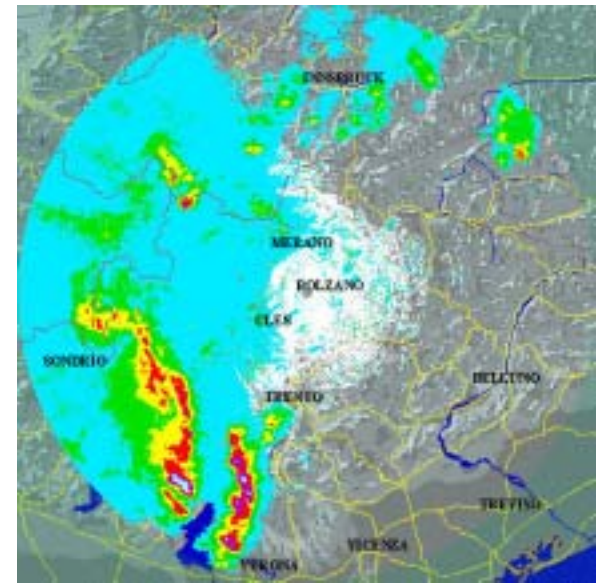
22.52



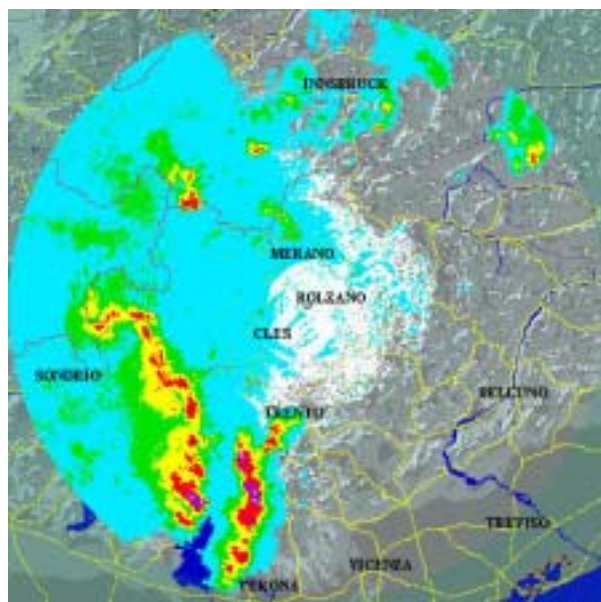
23.00



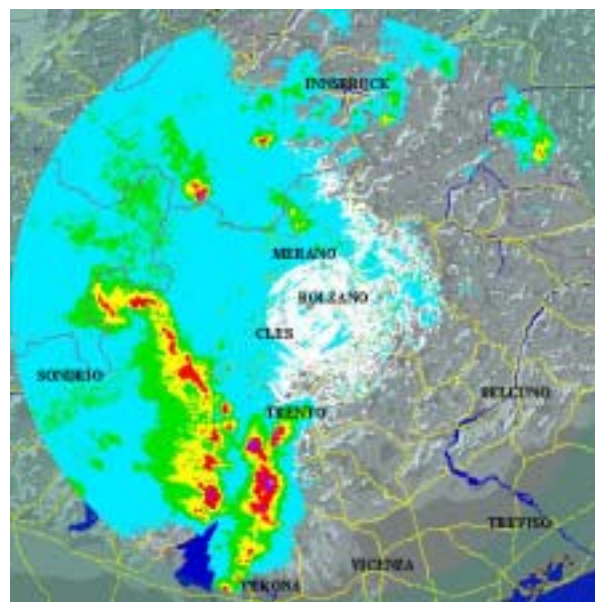
23.06



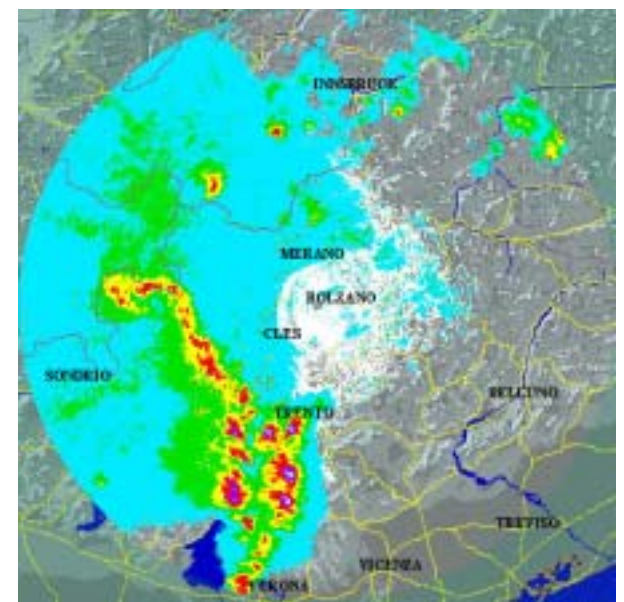
23.12



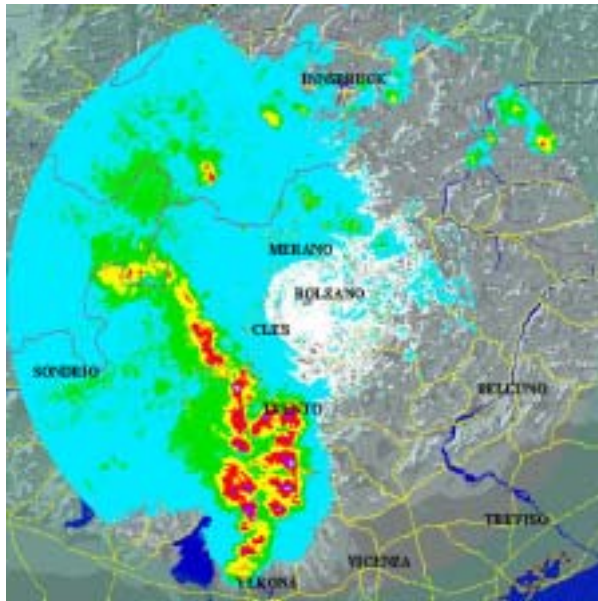
23.18



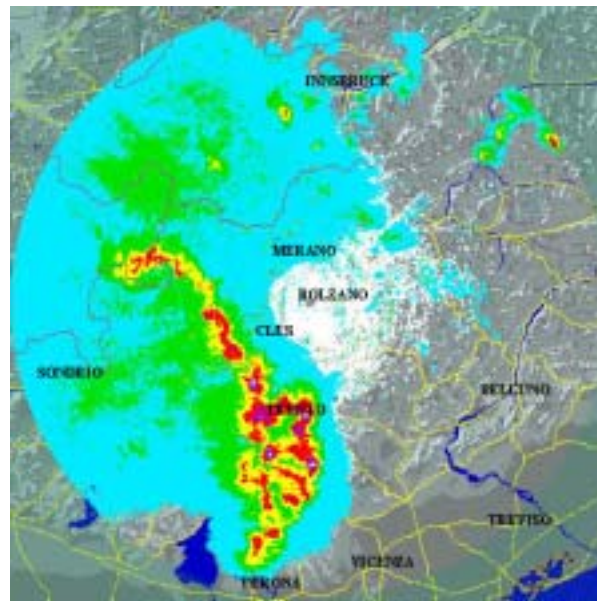
23.24



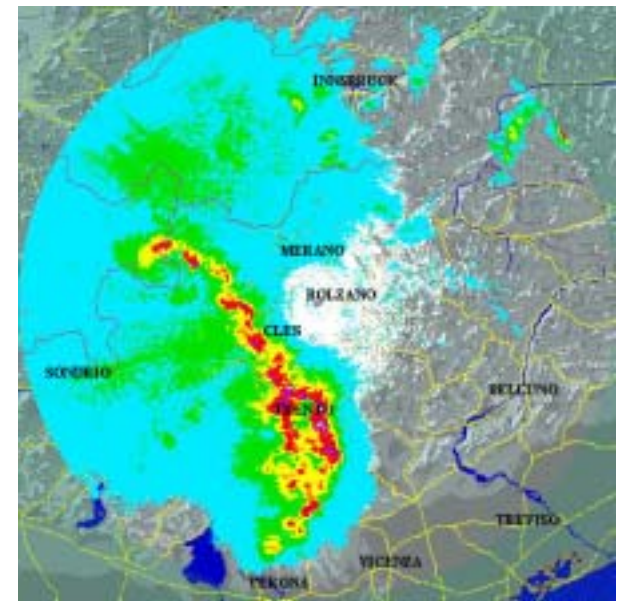
23.30



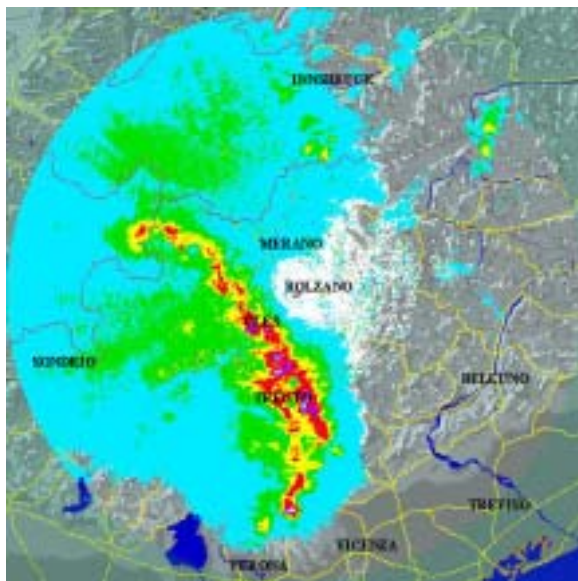
23.36



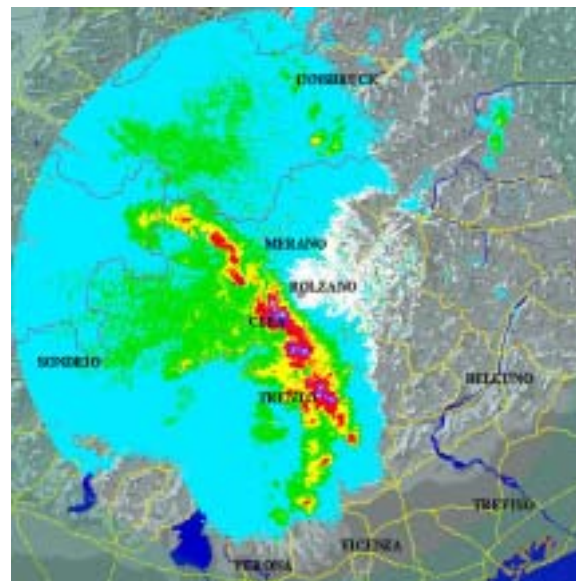
23.42



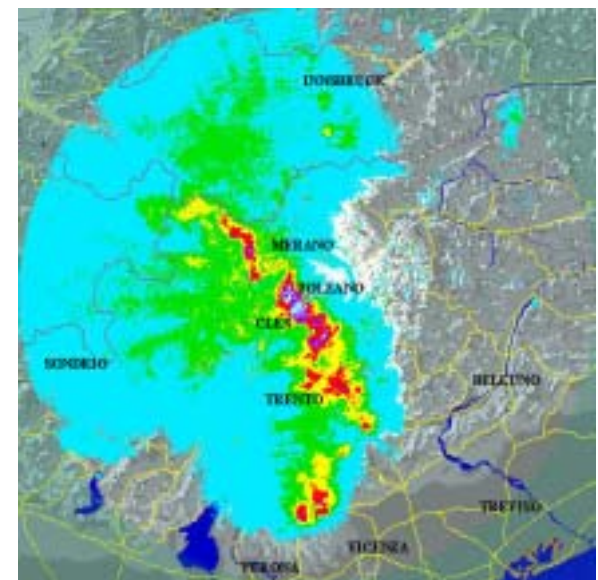
23.48



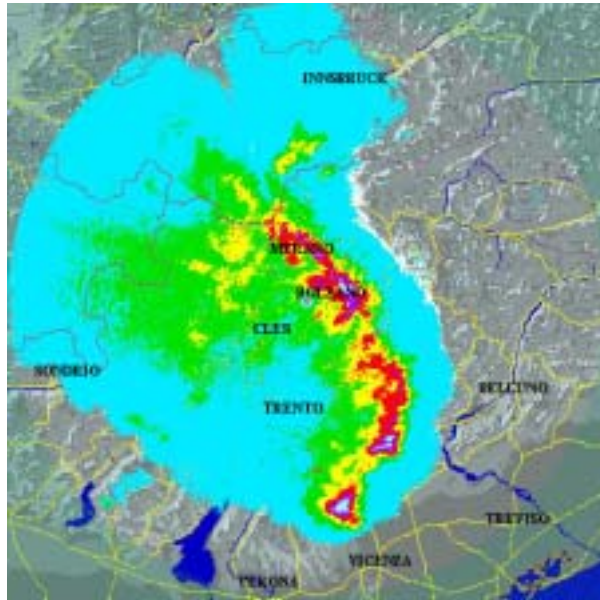
23.52



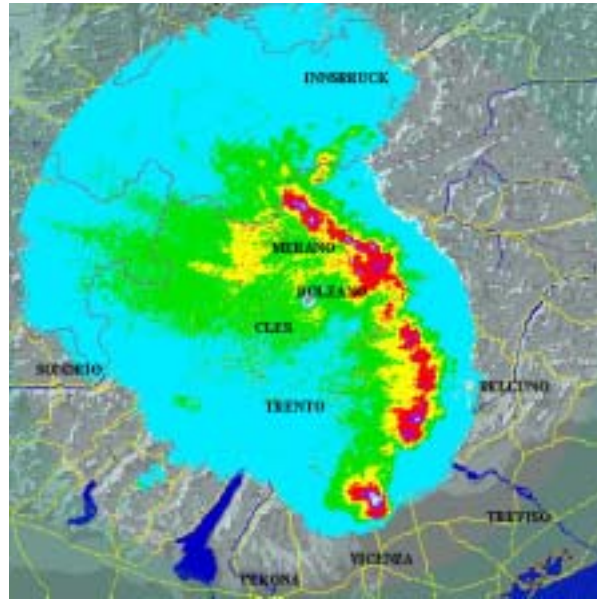
24.00



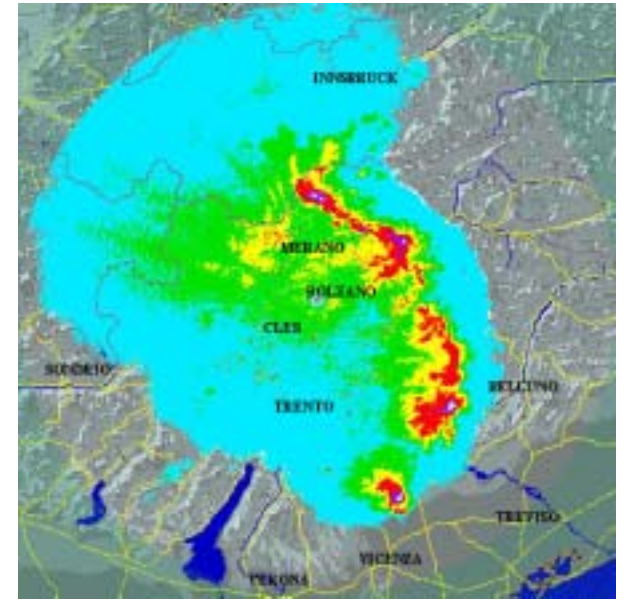
00.06



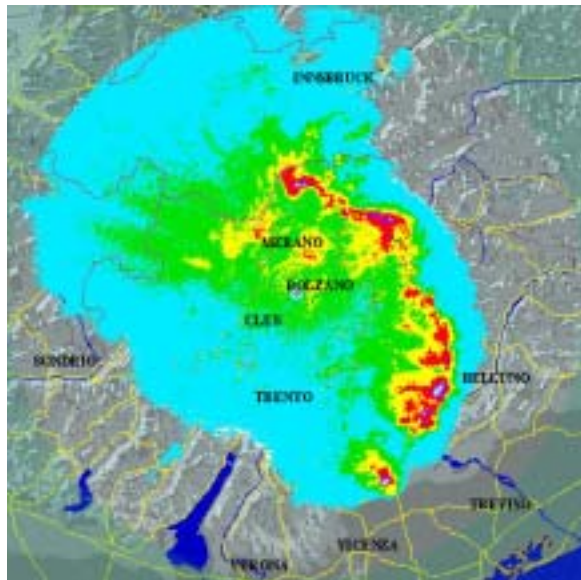
00.30



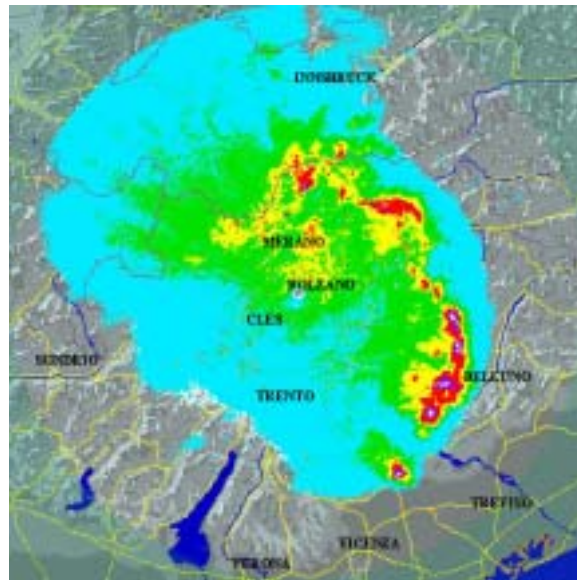
00.36



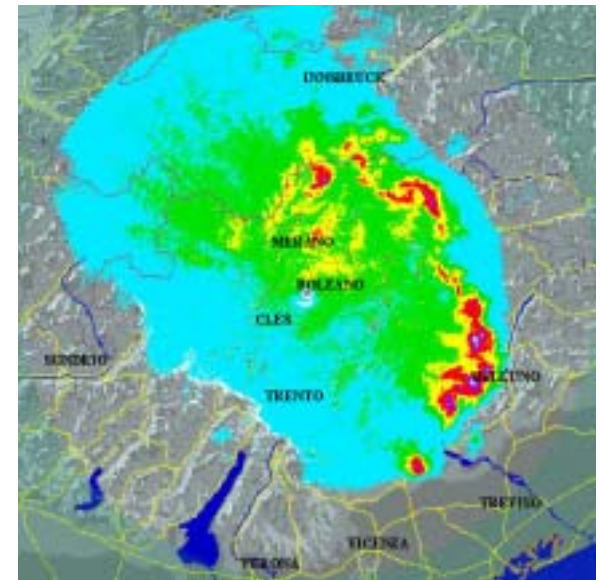
00.42



00.48

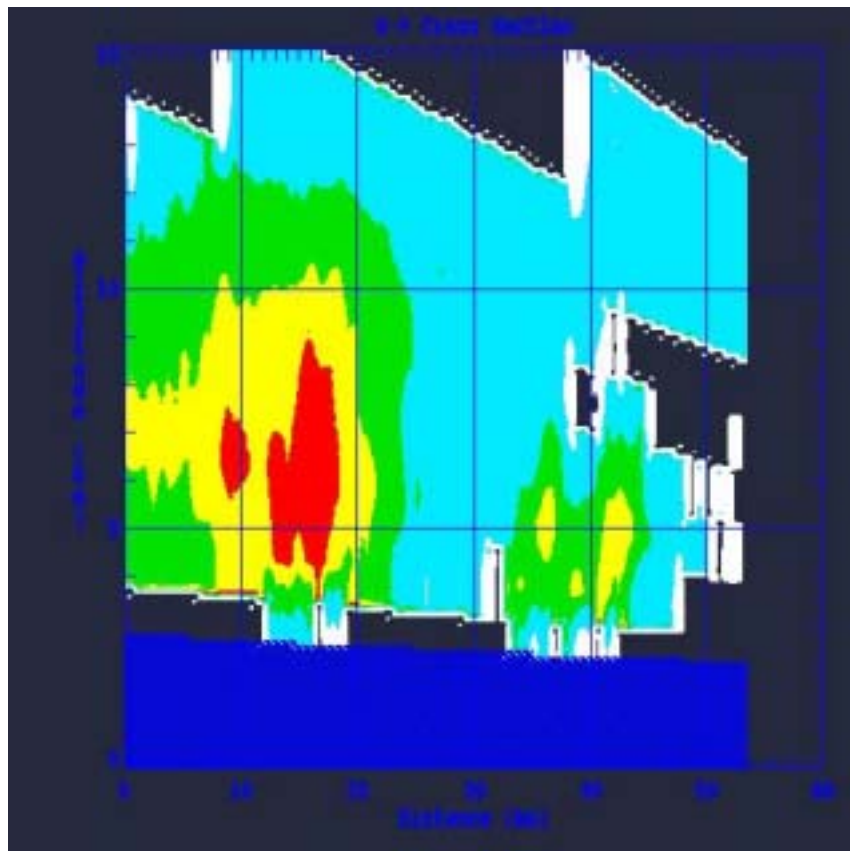


00.52



E' interessante notare nelle immagini dalle 22.42 alle 24.00 la formazione di un secondo fronte temporalesco davanti al fronte originario nel Trentino meridionale probabilmente originato dall'aria fredda discendente dal fronte originale. Una sezione ovest - est da Storo al Garda mostra la struttura verticale di tale sistema.

22.30



23.12

